



DON'T FORGET!!

Be sure to follow *The National Investor* on [Twitter -- @NatInvestor](#)

And on Facebook ("Like" us there!) --
at <https://www.facebook.com/TheNationalInvestor>



Chris Temple
Editor/Publisher

Good morning, Chris

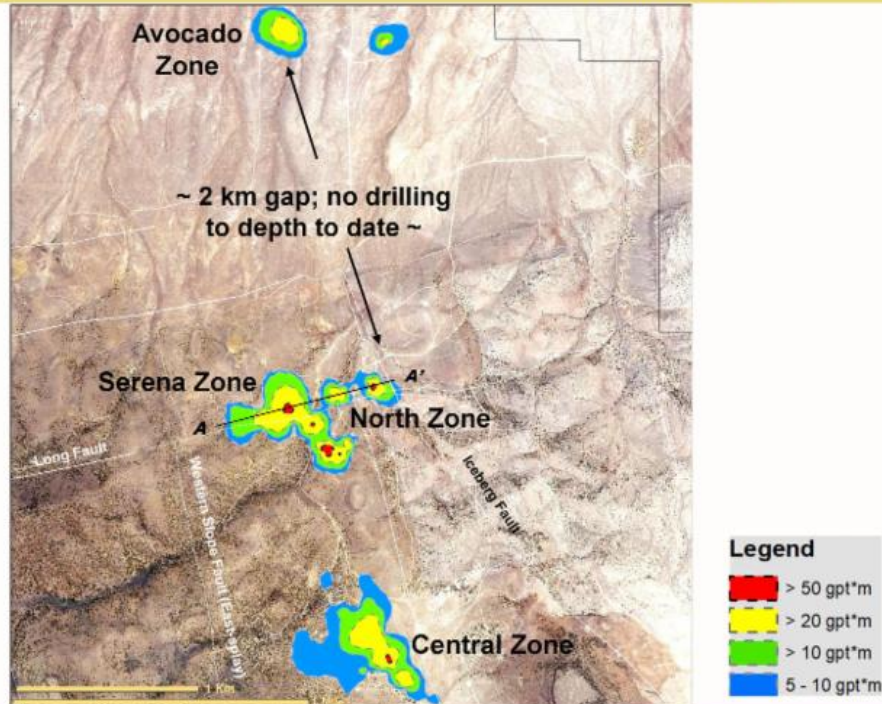
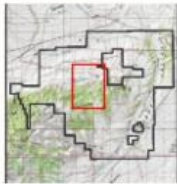
Yesterday I was able to catch up for a while with James Anderson, C.E.O. of **NuLegacy Gold (TSXV-NUG; OTCQX-NULGF)**. He and I spent some time recapping the priorities for the company as it launches its most aggressive-- *and important*--drilling program to date at its expansive Red Hill Project in North Central Nevada.

The press release announcing the details of this program are [RIGHT HERE](#).

James and I also recorded a near-15 minute overview of the company's strategy as it seeks to truly "hit a home run" in its drilling in 2018; **an admittedly risky strategy, but one with HUGE potential rewards if successful** (and especially given an entry point now with NUG shares at bargain basement prices!)

That audio is on my own [Featured Opportunities page](#) as is my recent comprehensive *written* Special Report on the company.

For present purposes here are a couple quick, key points:



*** Looking for *more* than the "enormous halo" of gold mineralization --**

To date, NuLegacy's drilling has identified several prospective areas; most notably within what Anderson describes as an "enormous halo" of gold mineralization over a 6-kilometer long area.

You see above three of those areas. For the most part, the early drilling now underway for this Spring will focus around Avocado and Serena.

That drill intercepts will find more gold is not in question; the goal is to find a (likely deeper) higher grade zone(s).

Serena zone mineralization ⁴					
Hole Number	Intercept		Thickness (m)	Grade (g/t)	Grade*thickness Gram-meters
	From (m)	To (m)			
IN17-05	123.4	144.8	21.4	2.85	61.0
including	131.1	135.6	4.5	9.76	43.9
SR17-01	150.9	201.2	50.3	1.00	50.3
SR17-02	173.7	185.9	12.2	0.67	8.2
SR17-04	135.6	157.0	21.4	0.85	18.2
SR17-06	123.4	164.6	41.2	0.77	31.7
SR17-08c	153.2	185.8	32.6	2.05	66.8
including	153.2	156.4	3.2	14.74	47.2
SR17-09	219.5	253.0	33.5	0.50	16.8

North zone mineralization ⁴					
Hole Number	Intercept		Thickness (m)	Grade (g/t)	Grade*thickness Gram-meters
	From (m)	To (m)			
RHB-17	71.6	112.8	41.2	1.02	42.0
RHB-35	77.7	109.7	32.0	1.23	39.4
RHB-40	97.5	138.7	41.2	3.92	161.5
including	121.9	126.5	4.6	25.21	116.0
RHB-49	38.1	109.7	71.6	0.78	55.8
RHB-58	131.1	166.1	35.0	3.41	119.4
including	141.7	149.4	7.7	7.30	56.2
RHB-64	68.6	120.4	51.8	1.27	65.8
RHB-68	128.0	161.5	33.5	2.46	82.4
RHB-82	54.9	76.2	21.3	2.16	46.0
including	61.0	65.5	4.5	6.09	27.4

Keep in mind that many open-pit gold mines these days--especially in Nevada--profitably mine ore grading at less than one gram of gold per ton. **So in the case of many assays received previously in the Serena-North Zone areas especially, the considerably higher grades than that (as you see in the above table) are VERY encouraging.**

*** A "Swinging for the Fences" strategy; and inspired to a great extent by Barrick Gold alumni --**

At most any point, NuLegacy could make the determination to focus on one of these existing zones and do the infill drilling necessary to grow a resource.

But as Anderson reminds us in [OUR INTERVIEW](#), everyone involved has their sights set higher than that right now.

Simply put, management--including three directors of NuLegacy who are former senior Barrick Gold management--and ALL of the company's large investors want exploration to continue focusing on a potential "home run" discovery.

And few have more confidence in the chances for a MAJOR discovery than one of the newest members of NuLegacy's team: its new District Geologist, Mr. Charles Weakly.

Weakly served some two decades with Barrick, contributing significantly to several of that company's multi-million ounce gold discoveries in recent years.



What has Weakly (and the rest of us!) excited is that one of those discoveries--Barrick's high grade Gold Rush project--is but a few miles away from Red Hill's zones, across a small valley.

Further, according to Anderson when we spoke, Weakly was pleasantly surprised in his initial work on drill core and other data of NuLegacy that NUG's "Lithologies, rock types, and structural characteristics are really exactly the same as across the valley."

By the sound of things, NuLegacy's newest team member is thus even more confident in the company's chances at finding a major discovery at Red Hill.

MUCH more so than with the average exploration company, you stand the chance for MANY times your money back if the company's aggressive strategy proves successful. As James summed things up in our discussion yesterday,

"If you own shares in NuLegacy Gold what you want is for us to step out and find something really big, really important. . .If you're going to have big risk, then you may as well have really big reward attached. . ."

NuLegacy Gold remains rated a speculative BUY for our Members in *The National Investor*.

As always, if you have any comments or questions, let me know.

All the best,

Chris Temple -- Editor/Publisher
The National Investor
<https://nationalinvestor.com/>

You can get information anywhere. Here, you get *knowledge*.

National Investor Publishing, P.O. Box 1257, St. Augustine, FL 32085-1257

[SafeUnsubscribe™ {recipient's email}](#).

[Update Profile](#) | [About our service provider](#)

Sent by chris@nationalinvestor.com in collaboration with

Constant Contact 

Try it free today